



Data and document management tool - made by CONSILIO and CLC

## PRODUCT FOLDER: SIMPLIFY EH&S!

There are various sources within and outside SAP containing information and data related to a given material, specification, intermediate or finished product or even machines, documents (i.e. studies, reports or patents) or office-files. It becomes increasingly harder to keep the overview, gather all needed information and start necessary process workflows accordingly.

A big help and a fantastic tool in this respect is the CONSILIO – CLC Product Folder.

### Highlights ...

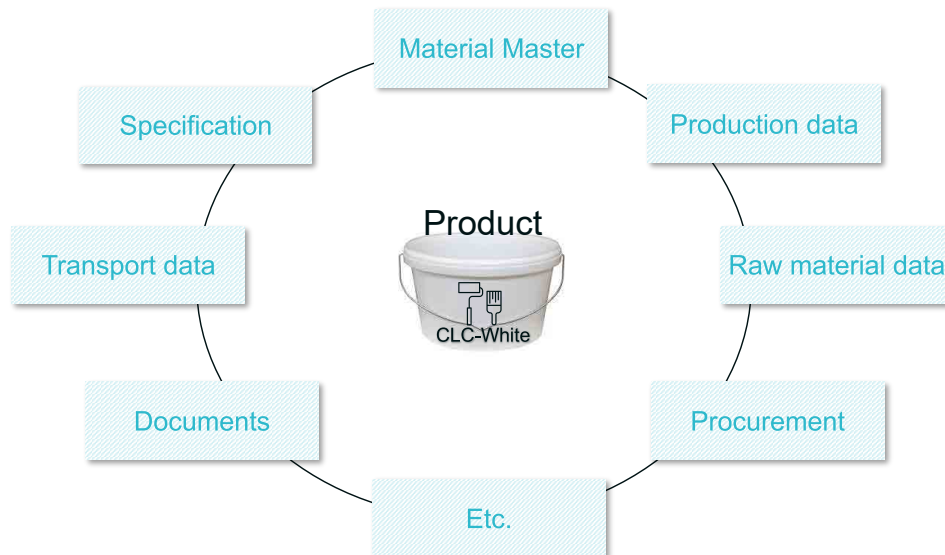
- Provides a holistic overview for a given case
- Guaranties data and document safety according to the SAP standard
- Simplifies any necessary activity and the controlling of it

## WE HELP YOU TO MEET YOUR CHALLENGES

### Initial situation

Product data can be found in SAP at various locations.

Furthermore, during the product (and production) live cycle, many more data and information, such as e-mails, reports, analyses (excel) etc will appear. Many of them are crucial for production and supply chain processes and need to be handled and archived according to legally required standards.



### Why not having everything in one view?

The Product Folder can combine data from any SAP transaction with documents and files you are usually using access via Microsoft's Windows Explorer. Such a folder or view on all required information can be customized according. The views are adjustable and enlargeable according to individual requirements – You decide what you want to see!

adjustable and enlargeable according to individual requirements

**Meta data/ Attributes**

**Components**

**File structure**

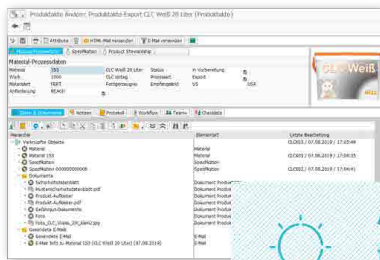
Hierarchie	Elementart	Letzte Bearbeitung
Verknüpfte Objekte		
Material	Material	CLCX03 / 07.08.2019 / 17:05:48
Material 153	Material	CLCX03 / 07.08.2019 / 17:04:35
Spezifikation	Spezifikation	CLCX03 / 07.08.2019 / 17:04:41
Spezifikation 0000000000006	Spezifikation	CLCX03 / 07.08.2019 / 17:04:41
Dokumente		
Sicherheitsdatenblatt	Dokument Produktakte	CLCX03 / 07.08.2019 / 14:23:52
Mustersicherheitsdatenblatt.pdf	Dokument Produktakte	CLCX03 / 07.08.2019 / 14:23:52
Produkt-Aufkleber	Dokument Produktakte	CLCX03 / 07.08.2019 / 14:24:01
Produkt-Aufkleber.pdf	Dokument Produktakte	CLCX03 / 07.08.2019 / 14:24:01
Gefahrgut-Dokumente	Dokument Produktakte	CLCX03 / 07.08.2019 / 14:23:40
Foto	Dokument Produktakte	CLCX03 / 07.08.2019 / 14:23:40
Foto_CLC_Weiss_20L_klein2.jpg	Dokument Produktakte	CLCX03 / 07.08.2019 / 14:23:40
Gesendete E-Mails		
Gesendete E-Mail	E-Mail	CLCX03 / 07.08.2019 / 17:05:48
E-Mail: Info zu Material 153 (CLC Weiß 20 Liter) (07.08.2019)	E-Mail	CLCX03 / 07.08.2019 / 17:05:48

Example of a Product Folder; White wall colour, 20 l

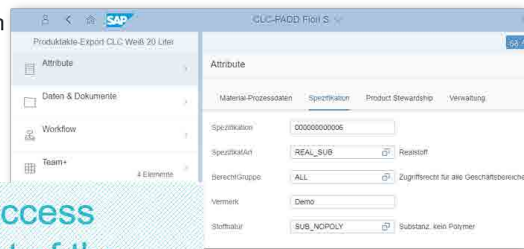
## How can I access the Folder?

The Folder can be easily accessed by several options:

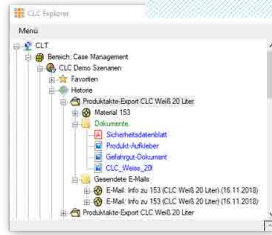
SAP GUI



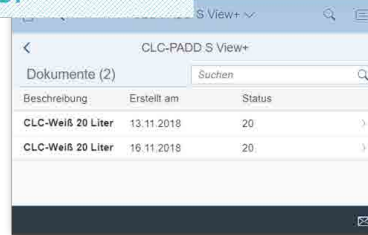
WEB-Integration



Office-Integration



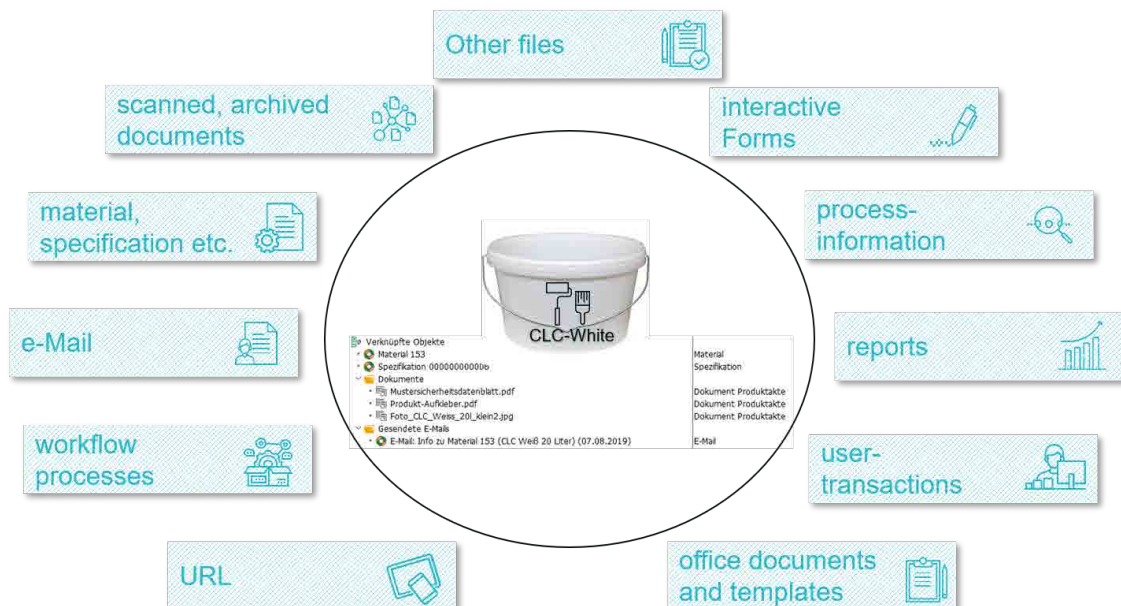
App-Integration



Alternative access  
to the content of the  
Product Folder

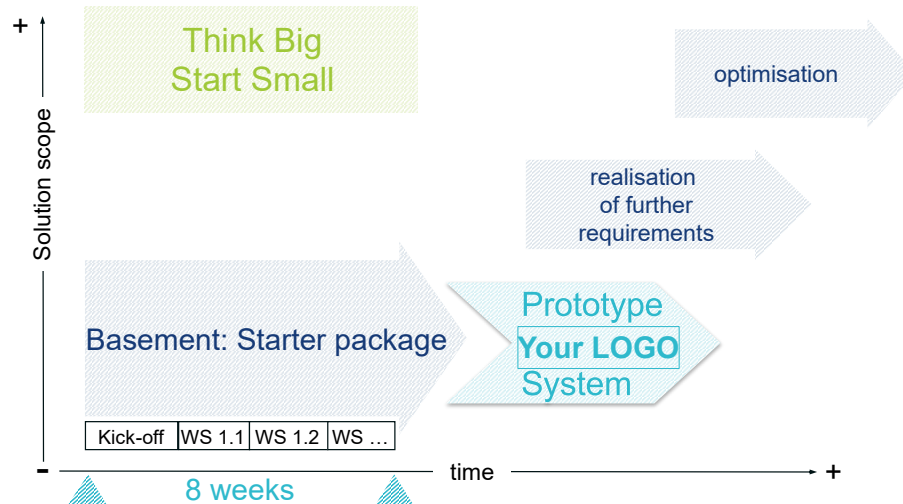
## Summary: All information in just one tool

Design and functionality of the Folder is freely defined by your needs – You decide about the kind and number of integrated processes!



## Implementation of the Product Folder

The CONSILIO-CLC Product Folder can be implemented fast and easy. After an initial workshop where the basic requirements will be figured out, we will be able to install a prototype on your test system where you can see (and feel) the basic functionalities. Optimisation processes will follow according to your needs.



With SAP EH&S you have product stewardship fully under control: Product compliance and risk management are thus securely covered worldwide.

Dr. Fridtjof Schucht  
Managing Consulting EH&S, CONSILIO GmbH



## EH&S Applications Outsourcing

Use our Application Management Services to ensure a fast response time as well as high planning and operational reliability. Remain permanently „compliant“ thanks to CONSILIO AMS.

Please contact us for further information and demo-sessions.



## Reference Customers



**WHAT DO INTELLIGENT AND ELEGANT SOLUTIONS HAVE IN COMMON? THEY ARE SIMPLE.**

We would be happy to find out together what this could look like in your case. **What do you want to optimize? >**